

# Trauma and Injury Intelligence Group Biannual Bulletin

Countess of Chester Hospital Emergency Department  
April 2014 to March 2015

July 2015



Centre for Public Health,  
Faculty of Education, Health and Community,  
Liverpool John Moores University,  
Henry Cotton Campus,  
15-21 Webster Street,  
Liverpool, L3 2ET

[cph.org.uk](http://cph.org.uk)

0151 231 4500

[tiig@ljmu.ac.uk](mailto:tiig@ljmu.ac.uk)

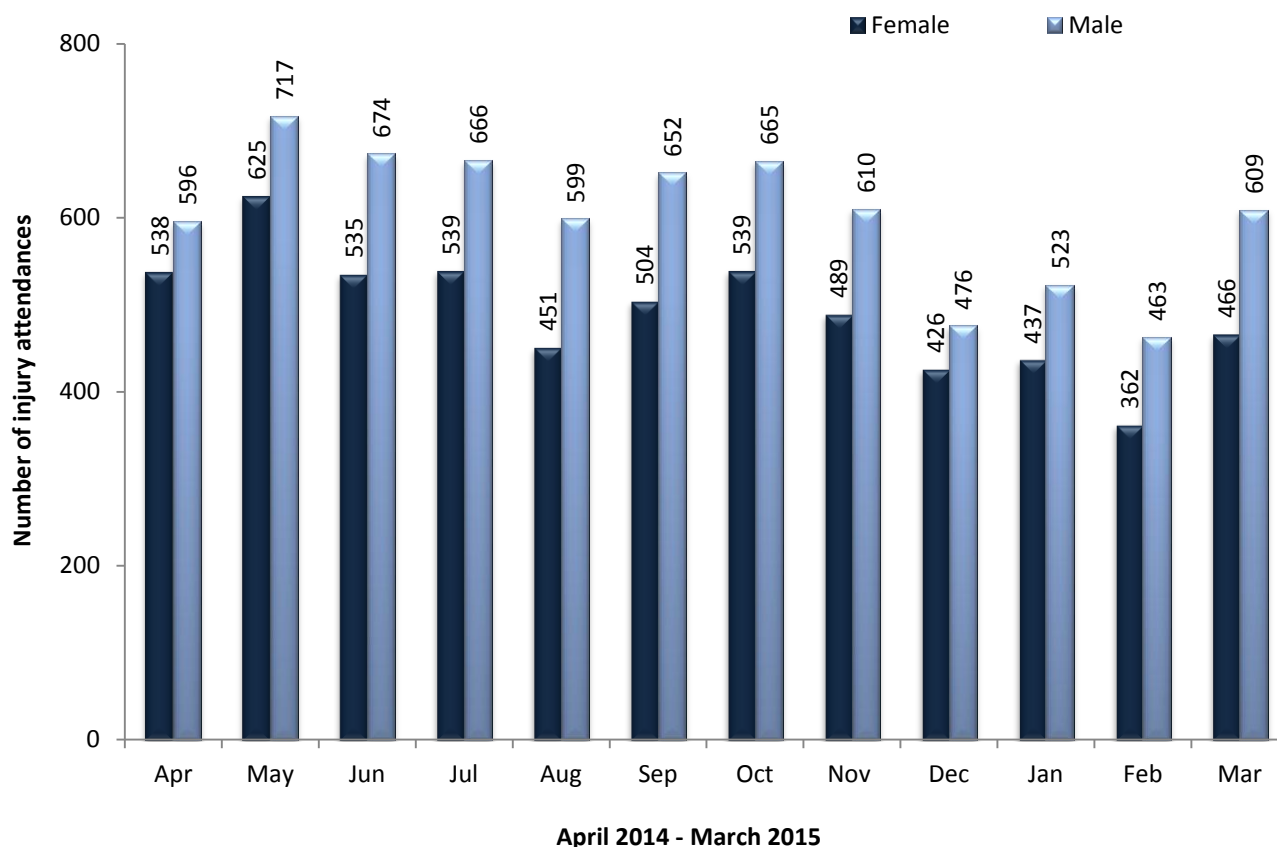
[tiig.info](http://tiig.info)

[twitter.com/tiig\\_cph](https://twitter.com/tiig_cph)

## ALL INJURY ATTENDANCES

This bulletin provides a breakdown of all injury attendances to Countess of Chester Hospital Emergency Department (ED) between April 2014 and March 2015. During this twelve month period there were 13,161 injury attendances. Injury attendances, calculated as a daily average, peaked in May 2014 (43 per day), while December 2014 and February 2015 had the lowest number of injury attendances (29 per day; figure 1).

**Figure 1: Gender of injury attendances by month, April 2014 to March 2015**



For all months there were more male injury attendances than female presenting to Countess of Chester Hospital ED (55%). Figure 2 displays injury attendances by age group; across the whole year one third (33%) of injury attendances were made by individuals aged 30 to 59 years, while 18 to 29 year olds accounted for 24% of total attendances.

**Figure 2: Age group of injury attendances by month, April 2014 to March 2015**

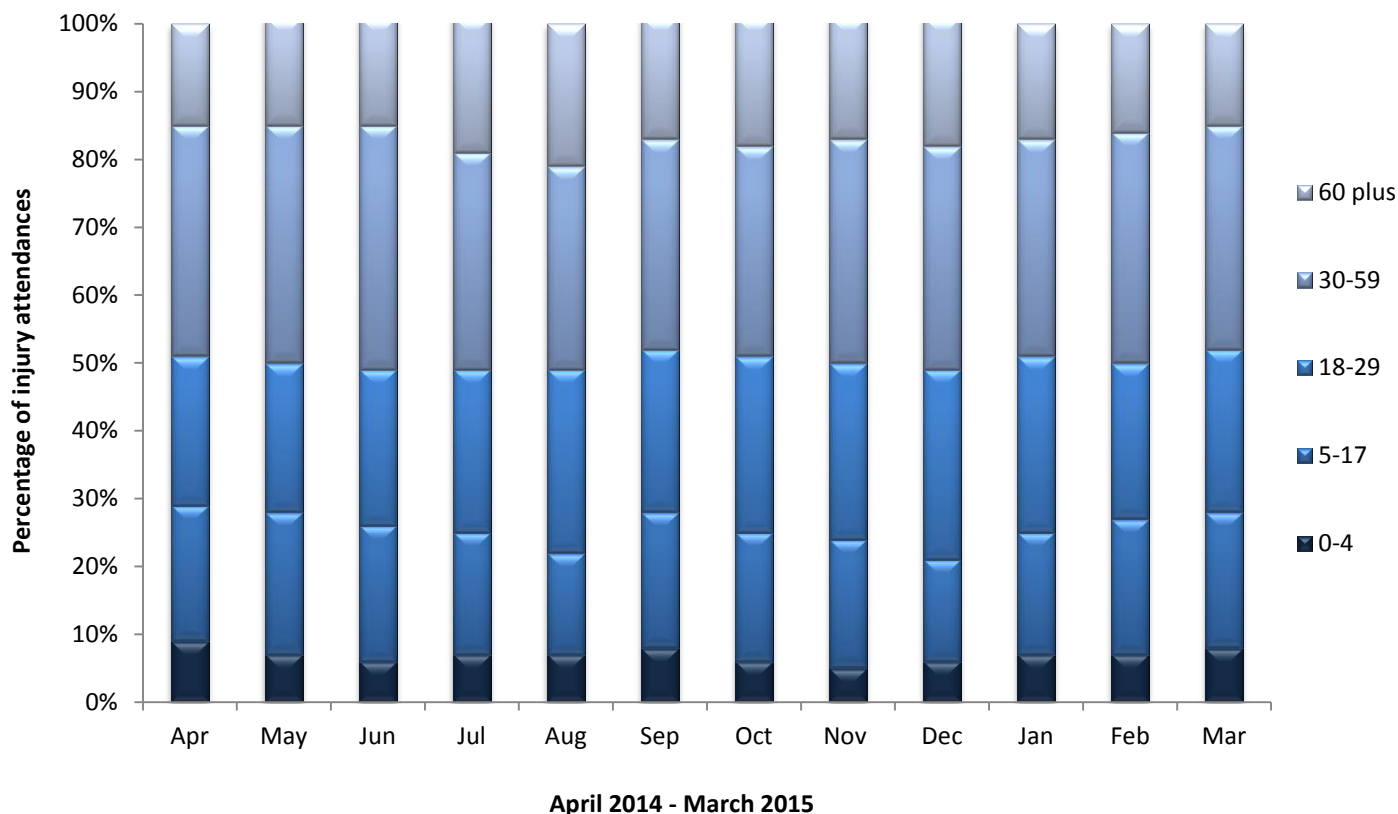


Table 1 displays the patient group for injury attendances to Countess of Chester ED. Just under three quarters (73%) of injury attendances were classified as other injury (n=9,617); 10% were recorded as road traffic collisions (RTCs) and 7% were sports injuries.

**Table 1: Injury attendances by injury group, April 2014 to March 2015<sup>^</sup>**

Injury group	Apr	May	Jun	Jul	Aug	Sep	Oct	Nov	Dec	Jan	Feb	Mar	Total	%
Other	842	1002	880	891	823	833	836	780	661	717	601	751	9617	73
Road traffic collision	97	118	123	125	98	108	130	118	79	68	90	125	1279	10
Sport injury	79	91	75	73	45	107	115	113	70	70	67	81	986	7
Deliberate self-harm	74	86	73	64	38	58	64	49	42	52	34	61	695	5
Assault	42	45	58	52	46	50	59	39	50	53	33	57	584	4
<b>Total</b>	<b>1134</b>	<b>1342</b>	<b>1209</b>	<b>1205</b>	<b>1050</b>	<b>1156</b>	<b>1204</b>	<b>1099</b>	<b>902</b>	<b>960</b>	<b>825</b>	<b>1075</b>	<b>13161</b>	<b>100</b>

<sup>^</sup> Other includes 'brought in dead' and 'firework injury' records due to low numbers (n<10)

Table 2 displays injury attendances by location of incident. Over four in ten were recorded as occurring in the home (41%), 15% occurred in public places and 8% occurred at work.

**Table 2: Injury attendances by incident location, April 2014 to March 2015<sup>1</sup>**

Incident location	Apr	May	Jun	Jul	Aug	Sep	Oct	Nov	Dec	Jan	Feb	Mar	Total	%
Home	496	585	548	545	459	472	504	432	345	398	279	336	5399	41
Other	336	389	310	305	322	336	350	351	304	285	320	348	3956	30
Public place	170	184	<195	192	169	171	189	<140	118	118	114	<170	1922	15
Work	80	101	100	94	90	92	<90	97	65	92	<70	109	1077	8
Educational establishment	<40	71	47	50	***	53	58	64	54	<55	31	97	619	5
Licenced premises	11	12	11	<20	7	32	13	15	<15	13	9	15	167	1
Countess of Chester Hospital	***	0	***	***	***	0	***	***	***	***	***	***	21	0
<b>Total</b>	<b>1134</b>	<b>1342</b>	<b>1209</b>	<b>1205</b>	<b>1050</b>	<b>1156</b>	<b>1204</b>	<b>1099</b>	<b>902</b>	<b>960</b>	<b>825</b>	<b>1075</b>	<b>13161</b>	<b>100</b>

Table 3 shows the discharge destination of injury attendances. Slightly less than half (47%) of attendees were discharged and required no further treatment. Thirteen per cent of attendees were discharged for treatment by a General Practitioner (GP), 13% left having refused treatment, while 10% were referred to a fracture clinic.

**Table 3: Injury attendances by discharge destination, April 2014 to March 2015<sup>1</sup>**

Discharge destination	Apr	May	Jun	Jul	Aug	Sep	Oct	Nov	Dec	Jan	Feb	Mar	Total	%
Discharged – did not require any follow-up treatment	530	654	564	544	536	559	587	489	394	429	355	547	6188	47
Left department having refused treatment	137	151	151	145	133	125	177	148	174	138	133	154	1766	13
Discharged – follow-up treatment to be provided by GP	164	175	164	207	127	176	134	159	99	128	120	102	1755	13
Referred to fracture clinic	116	118	139	117	103	117	123	123	77	109	83	120	1345	10
Admitted to a hospital bed	79	107	88	81	76	90	90	85	68	55	36	52	907	7
Referred to other out-patient clinic	47	43	36	38	28	34	31	26	20	33	20	28	384	3
Left department before being seen for treatment	27	37	36	35	20	28	30	30	33	28	31	35	370	3
Referred to other health care professional	26	41	21	30	19	<20	28	29	27	32	39	<35	344	3
Transferred to other health care provider	8	16	10	8	<10	7	***	10	10	8	<10	***	97	1
Died in department	0	0	0	0	***	***	***	0	0	0	***	0	5	0
<b>Total</b>	<b>1134</b>	<b>1342</b>	<b>1209</b>	<b>1205</b>	<b>1050</b>	<b>1156</b>	<b>1204</b>	<b>1099</b>	<b>902</b>	<b>960</b>	<b>825</b>	<b>1075</b>	<b>13161</b>	<b>100</b>

<sup>1</sup> Please note that all numbers less than five have been suppressed (\*\*\*) in line with patient confidentiality and if there is only one number less than five in a category then two numbers will be suppressed at the next level (e.g. <6) in order to prevent back calculations from totals.

## ASSAULT ATTENDANCES

There were 584 assault attendances at Countess of Chester Hospital ED between April 2014 and March 2015. The month with the largest number of presentations was October (n=59). Assault attendees presenting at Countess of Chester Hospital ED were mainly male (71%) and half (50%) were aged between 18 and 29 years. Table 4 shows most assaults (33%) occurred in 'other' locations, while 31% occurred in public places (31%). Assaults occurring in the home accounted for 16%, while assaults in licenced premises accounted for 11%.

**Table 4: Location of assault for assault attendances, April 2014 to March 2015<sup>1</sup>**

Incident location	Apr	May	Jun	Jul	Aug	Sep	Oct	Nov	Dec	Jan	Feb	Mar	Total	%
<b>Other</b>	9	15	23	14	13	15	18	15	27	9	13	20	191	33
<b>Public place</b>	19	16	18	<20	20	<10	20	7	8	17	9	22	181	31
<b>Home</b>	9	8	6	10	8	9	11	6	6	12	6	5	96	16
<b>Licensed premises</b>	***	***	7	8	***	11	<10	6	***	7	0	<10	67	11
<b>Work</b>	***	0	***	***	***	5	0	***	***	***	***	0	28	5
<b>Educational establishment</b>	0	***	***	0	0	***	***	***	***	***	***	0	14	2
<b>Countess of Chester Hospital</b>	***	0	0	0	***	0	0	***	***	***	***	***	7	1
<b>Total</b>	42	45	58	52	46	50	59	39	50	53	33	57	584	100